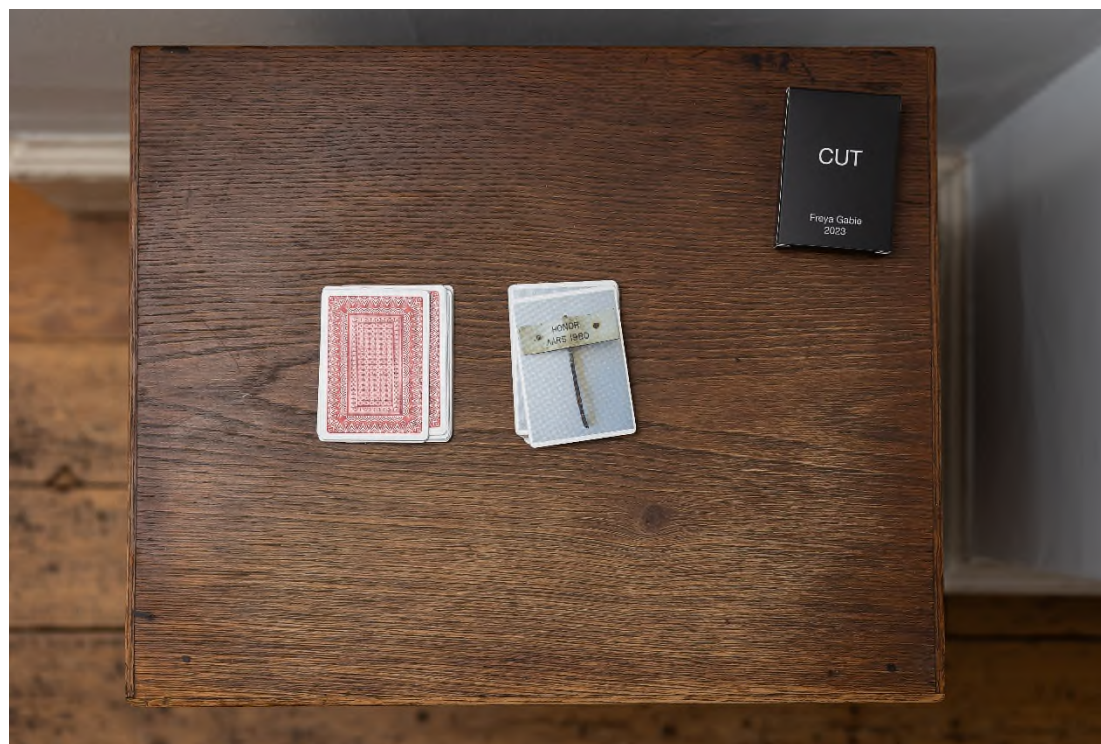


Freya Gabie

Freya Gabie studied sculpture at Chelsea College of Art and the Royal College of Art. Her work is site responsive and she regularly works collaboratively with individuals and communities in the UK and abroad, from opera singers, clog dancers, and archaeologists, to iron miners, and many people in between. She has exhibited and been commissioned widely, both internationally and in the UK. Previous projects include; 'Duet' The Bar, El Paso, USA, 'All Fired Up' a collaborative commission with Historic England responding to the Ceramic Industry of Stoke on Trent and Poole, 'Hold The Line' Journeying aboard the Dr Fridtjof Nansen vessel with the Norwegian Institute of Marine Research down the South West coast of Africa, 'Leonardo Da Vinci, A life in Drawing' Bristol Museum, Palsmuseum, Sweden, Château de Bosmelet, Diep-Haven Festival France, USF Art Centre, Norway, Neo: Bolton, 108 New York, Fljótstunga Iceland and, Franconia Sculpture Park USA. She is currently undergoing a public artwork commission for UCL for the new neurological research hospital being built on Gray's Inn Road for the IoN, DRI, and UCLH. Freya has just returned from a residency in Bangalore, India, where she has been responding to two historic gardens, Lalbagh Botanic garden and Cubbon Park, towards an exhibition at Artcore, Darby, UK in spring 2024.



Cut 2023

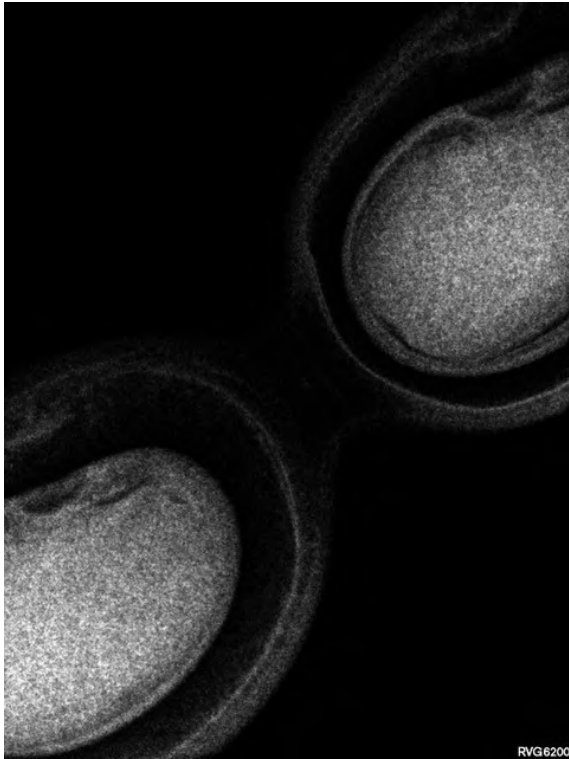
A pack of playing cards showing the rose names from the Municipal Rose Garden, El Paso, U.S.A.



Duet 2022

A film made in two gardens across spring: The Municipal Rose Garden, El Paso, Texas, USA, and El Huerto Del Señor Community Garden, Ciudad Juarez, Mexico.

The two gardens are 7.5 miles from each other



Contested Spaces 2023

Partial X-rays of plants etched on glass, placed on oak shelves

X-Rays of indigenous plants found growing along the border: Mexican buckeye, cholla, octotillo, soaptree yucca, Texas mountain laurel, desert willow

Each 44.5 x 30 cm



Thief 2023

Copper, porcelain and terracotta.

Dimensions variable



Proxy 2023

Glass rope

7 metres



Difficult Maps 2022

2 framed drawings

Pen on paper

Each 79 x 59 cm

Drawings of Chamiza Plants found on land claimed by both the U.S. and Mexico during the historic Chamizal Land Dispute



An Invitation 2024

Giglee print on Dibond

73 x 50 cm

A piñata created with manufacturers and suppliers in Mexico and the U.S crafted by artisans in a Juarez factory in Mexico to Freya Gabie's design - a copy of a popular American hammer which is sold in the US as American-made, while it is actually manufactured in Mexican maquiladoras. This piñata is currently being sold in Boom Boom Candy Piñatas, El Paso, U.S. Photo taken of *An Invitation* in the store in December 2023 by Kate Feuille.

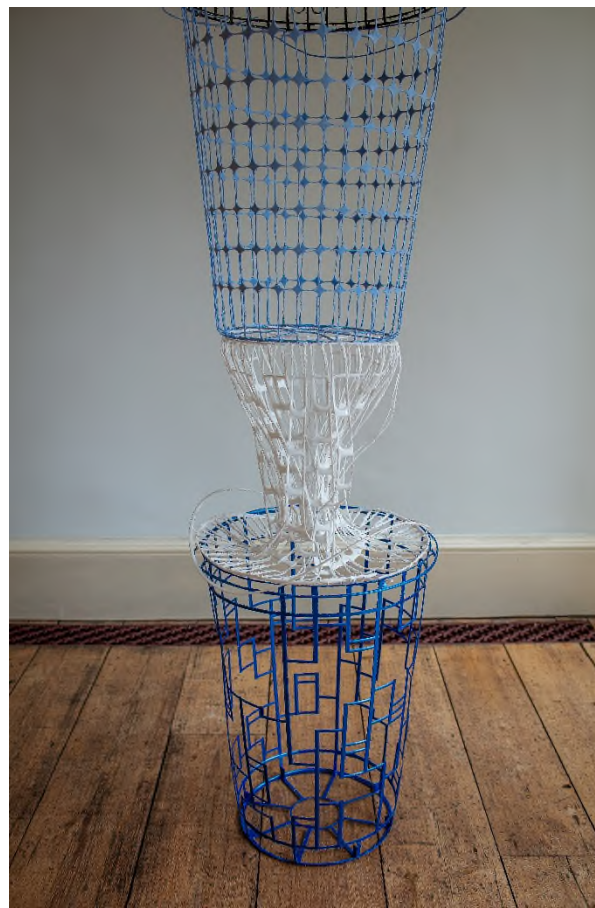


Parallel Plumbline 2022

Cast brass and boundary rope

Dimensions variable

Rocks picked up in Ciudad Juarez Mexico and El Paso USA. Each rock was carried across the border and placed in the corresponding city



Between the Lines 2023

Partly erased plastic laundry baskets

Dimensions variable



Lifebuoy 2023

96 red Lifebuoy soap bars washed away 1g at a time, on breeze blocks

528 cm



Dissonant Landscapes 2022/23

9 framed partially erased black and white giglee prints

Each 31.5 x 57 cm

Photographs taken along the route of the Rio Grande River, USA, from Taos New Mexico to Texas where the river becomes the international border line with Mexico to Del Rio



Mandown 2022

Looped video – projection 1'

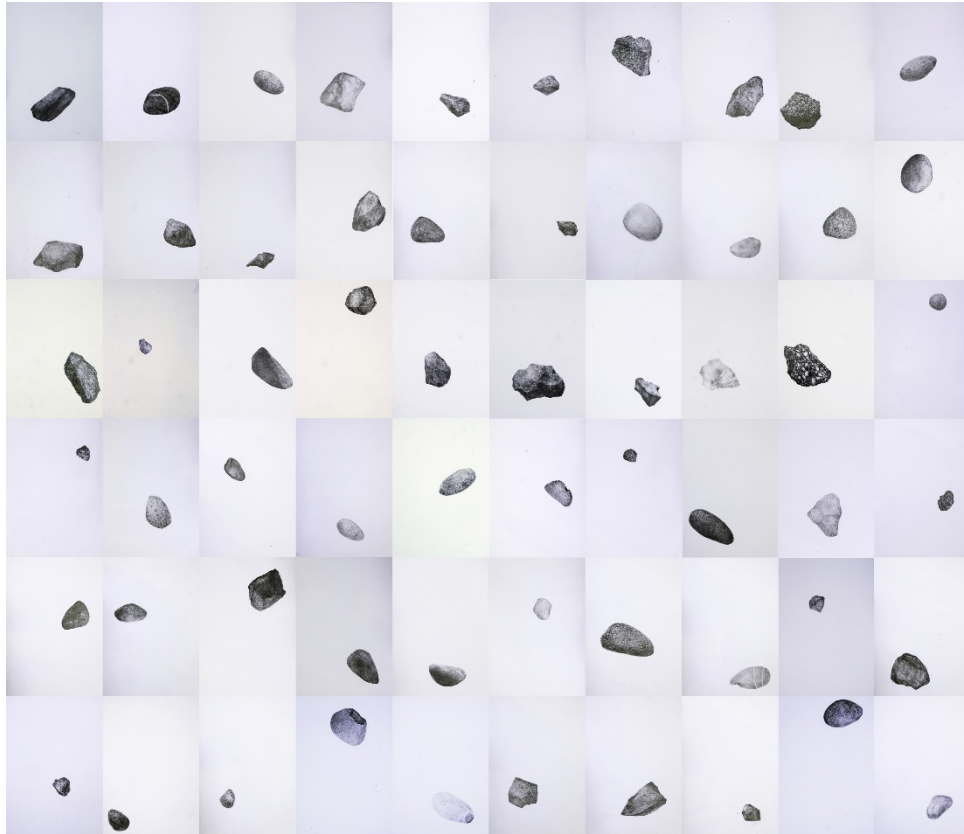


Avenue

Chateaux De Bosmelet, Normandy, France – West Beach, Newhaven, UK

Diep Haven Festival 2018 France / UK

Avenue was created simultaneously in Normandy and on Newhaven's West Beach along a laser axis between the two countries. The work seeks to explore the historical connection between the French and English landscape through an exchange of local material – chalk – between the two coasts, with each 'avenue' being formed with material displaced from the others coast. The line follows the exact trajectory of the proposed path of the V1 missile route, these doodlebugs were developed and built by the Nazis at Chateau de Bosmelet as part of an uncovered plot to bomb Britain.



Eleven Stones 2019

From HOLD THE LINE, an ongoing project unearthing historic refugee routes taken by people across the world with the aid of a Nansen Passport. These journeys first made almost a century ago are uncovered and re-traced on foot.

Each journey undertaken is represented through a series of drawings of the small stones passed along the way. Each stone is rendered twice, with the first sent to people around the world who would like to connect with the journey, the second forming part of a lasting archive.



Romantic Gesture 2013

A site specific intervention at Franconia Sculpture Park where a tree was buried back into the landscape it had grown out of.

Franconia Sculpture Park, MN, USA

Held in a private collection



Dark Steps 2016

Filmed performance, 3:52 min

A Clog dance interpreting the financial trading data of BREXIT performed by the Seven Stars Sword and Step Dancers, Wigan



Ebb 2016

Pencil drawing on scrolled paper, replicating a marmorino marble column found in the Venetian ghetto



Coalhole A Cappella, Flow My Tears 2014

Film performance 04:08 min

An opera singer performs Lachrimae from a coal hole beneath the pavement to passers by on the street above, London

For all enquiries, please contact danielle@daniellearnaud.com